

Program Description

An educational, fully CME accredited program on Lyme & other tick-borne diseases for health care providers.

Educational Objectives:

- ✓ To learn about novel scientific methods that allow for rapid identification of new organisms
- ✓ To learn evidence linking differential gene expression of *Borrelia burgdorferi* to different disease manifestations
- ✓ To understand the neuropathology of Lyme disease & potential significance of cyst forms of *Borrelia burgdorferi*
- ✓ To understand the immunologic effects of co-infection with *Babesia microti*
- ✓ To enhance skills in testing, differential diagnosis, and treatment for infection with *Borrelia burgdorferi*
- ✓ To learn about beneficial effects of antibiotics beyond the anti-microbial ones
- ✓ To understand the range of the host ticks for tick-borne diseases & the diversity of pathogens

Who should attend

Physicians of all specialties, nurses, psychologists, scientists, public health workers. It is also open to the public.

Accreditation & Disclosure Statements

The College of Physicians and Surgeons of Columbia University is accredited by the Accreditation Council for Continuing Medical Education (ACCME) to provide continuing medical education for physicians. The College of Physicians and Surgeons designates this educational activity for a maximum of 8.75 AMA PRA Category 1 Credit(s)TM. Physicians should only claim credit commensurate with the extent of their participation in the activity. This program has been planned and produced in accordance with the Essential Areas and Policies of the Accreditation Council for Continuing Medical Education (ACCME).

The College of Physicians & Surgeons must ensure balance, independence, objectivity, and scientific rigor in its educational activities. All faculty participating in this activity are required to disclose to the audience any significant financial interest and/or other relationship with the manufacturer(s) of any commercial product(s) and/or provider(s) of commercial services discussed in his/her presentation and/or the commercial contributor(s) of this activity. When unlabeled uses are discussed, these will also be indicated.

Directions: <http://www.ichotelsgroup.com/h/d/cp/1/en/direction/phlcc>

All transportation and monetary information below is subject to change. Please confirm before using.

Airport Information

Philadelphia International (PHL)

- Distance: 8 MI/ 12.87 KM NW
- Taxi Fee: \$26.50 (USD)
- Time by taxi: 15 Minutes
- Time by train: 20 Minutes

Area Train/Subway Information

Amtrak 30th St. Philadelphia

Train Station Name: Amtrak 30th St. Philadelphia
Train Station Distance 0.5 MI/ 0.8 KM E
Taxi Fee \$5.00 (USD)

Parking Information

Valet parking \$31 (USD), 24 hour access adjacent to the hotel. Owned and operated by Interpark, Inc. Rates subject to change without notice.

FROM BALTIMORE, WASHINGTON, D.C., PRINCETON, AND ALL POINTS NORTH AND SOUTH VIA I-95:

Take I-95 to Exit 22 for 676 West to Central Philadelphia. Go 1 mile to the Broad Street Exit. Follow on 15th Street to J.F.K. Boulevard (5th Light) and turn right. Go 4 blocks to 19th Street and turn left. At the next light, Market Street, turn left. The hotel is located on the right side. The garage entrance is just before the main entrance to the lobby.

FROM NEW YORK, NEW JERSEY, AND ALL POINTS NORTHEAST- VIA N.J. TURNPIKE:

Take the NJ Turnpike to Exit 4, Philadelphia/Camden. Take 73 North to 38 West, then follow signs for the Ben Franklin Bridge/30 West. Once across the bridge, follow 676 West 1 mile to the Broad Street Exit. Follow 15th Street to J.F.K. Boulevard (5th light) and turn right. Proceed 4 blocks to 19th Street and turn left. At next light, Market Street, turn left. The hotel is located on the right side. The garage entrance is just before the main entrance to the lobby.

FROM ATLANTIC CITY, NJ AND SURROUNDING AREA:

Take the Atlantic City Expressway to 42 North. Keep left onto I-76 towards the Walt Whitman Bridge/Philadelphia. Once across the bridge, take I-76 West to Exit 345/30th Street. At the second light, make a right onto Market Street. Proceed 5 blocks to 19th. The hotel is located on the right side between 19th and 18th Streets. The garage entrance is just before the main entrance to the lobby.

FROM PITTSBURGH, HARRISBURG, ALL POINTS WEST VIA PA TURNPIKE:

Take PA Turnpike East to Exit 24, Valley Forge. Connect with I-76 East, following signs for Central Philadelphia. Take Exit 345/30th Street, follow around 30th Street Station to the second light. Turn left onto Market Street. Proceed 5 blocks to 19th Street. The hotel is located on the right side between 19th and 18th Streets. The garage entrance is just before the main entrance to the lobby.

FROM NORTHEASTERN PENNSYLVANIA:

Take Rte. 9 South, Northeast Extension to the Pennsylvania Turnpike. Go West on the Turnpike to Exit 25 for I-476 to I-76, Schuylkill Expressway East. Follow I-76 E to Exit 345/30th Street. Follow around 30th Street Station to the second light. Turn left onto Market Street. Proceed 5 Blocks to 19th. The hotel is located on the right side between 19th and 18th Street. The garage entrance is just before the main entrance to the lobby.



Lyme Disease Association, Inc.

PO Box 1438 Jackson New Jersey 08527

NON-PROFIT ORG.
PERMIT # 62
U.S. POSTAGE PAID
BRICK, NJ

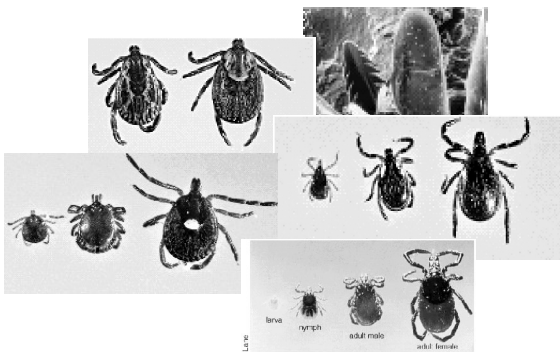


Photo Thanks:

Ixodes scapularis hypostome (barbed), Manfred Bayer, MD; *Ixodes Scapularis* (deer tick) James L. Occi, MA,MS; *Ixodes Pacificus* (western black-legged tick), Robert S. Lane, PhD; *Amblyomma Americanum* (lone star), James L. Occi, MA,MS; *Dermacentor variabilis* (dog tick), James L. Occi, MA,MS

The College of Physician & Surgeons of Columbia University
&
The Lyme Disease Association
present

**Lyme & Other Tick-Borne Diseases:
Seeking Answers through Science**
8.75 Category 1 CME Credits

Lyme & Other Tick-Borne Diseases: Seeking Answers through Science

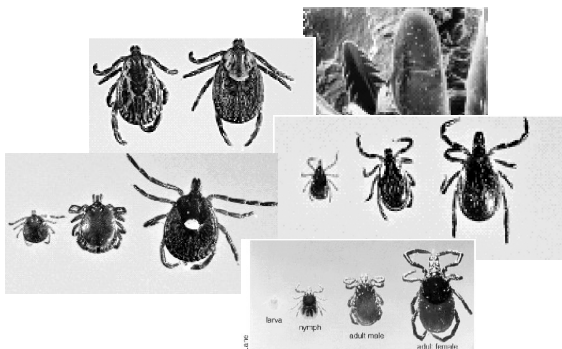


Photo Thanks:

Ixodes scapularis hypostome (barbed), Manfred Bayer, MD; *Ixodes Scapularis* (deer tick) James L. Occi, MA,MS; *Ixodes Pacificus* (western black-legged tick), Robert S. Lane, PhD; *Amblyomma Americanum* (lone star), James L. Occi, MA,MS; *Dermacentor variabilis* (dog tick), James L. Occi, MA,MS

A National Conference for Physicians & Allied Health Professionals
FRIDAY, October 20, 2006 . . . Crowne Plaza-Center City, PHILADELPHIA, PA

Jointly Sponsored by:



Lyme Disease Association Inc.



COLUMBIA UNIVERSITY

*College of Physicians
and Surgeons*